



Hotline: +86 400 109 1122

Fax: +86 573 8911 9916

Website: [www.se-audiotechnik.com](http://www.se-audiotechnik.com)

SE2019/01/2000



# COLUMN SYSTEM 音柱系列

授权的当地代理 Your authorized local dealer:



**s|||e AUDIOTECHNIK**

品牌属于德国斯贝克公司，彩页内容仅供参考，本公司保留更改权利。若有更改，恕不另行通知。  
is a brand of Speaker Electronic Co.,Ltd. The company reserves the right to alter the designs  
and material specifications of products shown in this publication without notice.



美高微信



美高官网



### s))e AUDIOTECHNIK Corporate History

In 1980, Michael von Keitz established the company Speaker Trade in Solingen, Germany.

It did not take long for the ambitious newcomer to gain an excellent global reputation amongst audio-enthusiasts with his MIVOC brand.

1997 marks the next milestone in our corporate history by founding the 100% affiliated company Speaker Electronic in the periphery of Shanghai. Led by German management and using advanced German technology,

s))e AUDIOTECHNIK PA-speakers of outstanding quality are produced and distributed worldwide.

Since then, our global staffs have steadily grown and currently comprise about 800 employees who, by the use of our peculiar know-how, help manufacture all essential components of loudspeaker boxes inhouse: Production of speakers starting from tiny 0.5" speaker to massive 24" subwoofer driver, crafting of housings using all kinds of important woods and surfaces, assembly of complex electronics ranging from passive crossovers to Class A/B amplifiers to digital high-power amplifiers with DSP and universal SMPS.

State-of-the-art manufacturing technology and very strict quality control guarantee you a maximum reliability of our products.

Last but not least, we are extremely proud of the excellent sound tuning that is being applied by our international team of engineers.

Please enjoy s))e AUDIOTECHNIK!

### s))e AUDIOTECHNIK 品牌历史

1980年，Michael von Keitz先生在德国佐林根成立了speaker贸易公司。美高这一品牌强势入驻，没过多久就在音响爱好者中获得了极好的全球知名度。

1997年在上海周边城市成立了附属公司—斯贝克电子，这在公司历史上具有里程碑意义。凭借德国的管理和先进的技术，

s))e AUDIOTECHNIK 生产的优质专业音响远销国内外。

其后，我们的员工数量也在稳定增长，现有约800名员工，凭借其专业的生产技能，本公司可自行生产所有的音箱部件：小至0.5英寸喇叭，大至24英寸的重低音，采用各种上好的木材制成的音箱箱体，从被动分频器到A/B类功放带DSP以及通用开关电源的数码高功率功放的各种装配工艺复杂的电子类产品。

最先进的生产技术和严格的质量管控向您保证我们的产品是最值得信赖的。

最后一点，对于我们国际团队的工程师的卓越调音运用能力，我们感到非常自豪。

s))e AUDIOTECHNIK 使您乐在其中！



### s))e M-A5 / M-A8

04 | 07 产品特点 / Product Features

08 | 11 应用场所 / Applications

### s))e M-A5 / M-A8

12 | 13 产品参数列表 / Specification

## “多合一”音柱系统 ALL-IN-ONE COLUMN SYSTEM

M-A5系统是一款紧凑型模块化的有源“多合一”扩声系统。这是音乐人以及音响师们演示声音和播放音乐活动的完美解决方案。由于无需音箱线和支撑架，这款“即插即用”的播放系统装卸和使用都非常快速灵活。

6分频有源系统使得频响更宽广，音质更加清晰。该系统功放内置压限及均衡与声音平衡的功能，配合独特的单元保证了产品更大更远的覆盖范围和声场的均匀分布，即使在场地的最偏远的角落也保证了声音的清晰度。

M-A5 系统结合了PA系统和监听系统，保证观众和表演者的相同声音体验，在系统运输上也极为便捷。M-A5 都有MIC、MP3 / HI-Z 输入接口，小型场所使用无需额外调音台。M-A5系统相对于而言，功率增加了一倍。

M-A5 is a compact active all-in-one column system. It is the perfect solution for musicians, DJs, presentations and events with sophisticated music playback.

The six-way active system generates a clear, dynamic and balanced sound throughout the frequency range. The array configuration ensures greater sound coverage with very consistent sound distribution even into the farthest corners of the venue. M-A5, which combines PA and monitoring system, provides the same sound experience for both audience and musician.

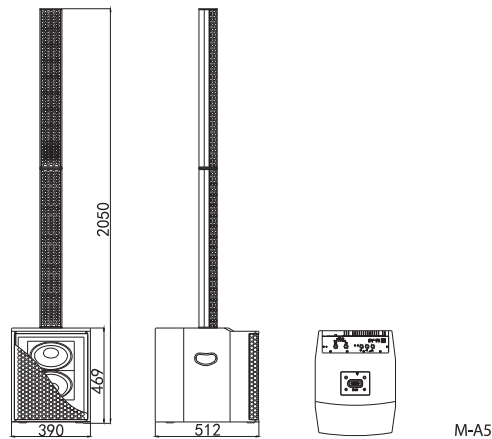
The system can be easily transported from one location to another. Since both and M-A5 have been equipped with MIC and MP3/Hi-Z input, an additional mixer is not necessary for small-scale venues. In comparison to , M-A5 offers twice as much output power. Just plug in and you are ready to go!

### M-A5 应用场所 Applications

- 酒吧
- 乐队扩声
- 会议室
- 多功能厅
- Bars
- Bands
- Meeting rooms
- Multi-media rooms



### 结构图 Structural Diagram



### 宽广均匀的水平声场覆盖

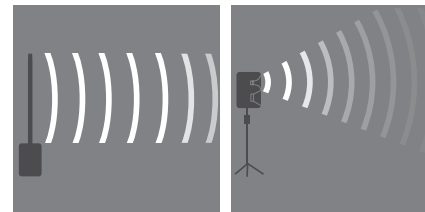
Wide horizontal sound coverage



独特的研发科技，采用柱面波扩散技术，避免声音过快的衰减。同时120°的水平扩散角度，实现宽广均匀的声音覆盖。

The unique 120° horizontal dispersion technique of the cylindrical wave avoids quick sound attenuation and makes the sound performance more stable in different environments by also strongly reducing floor and ceiling reflections.

### 声波示意图 Structural Diagram



音柱系列

传统音响

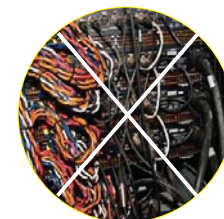
### 操作简便

Easy operation



2分钟即可完成系统搭建。M-A5/M-A8只需插入一根电源线线和一根信号线，任何人经过几分钟的培训就能操控此设备。相比常规音箱系统繁杂的连接线，多得眼花缭乱的旋钮，M-A5/M-A8大大降低了使用难度。

Few components guarantee an easy and quick speaker setup as this system needs virtually no product training. No complex wiring, no truckload of speakers and accessories - just plug in power cable and signal wire and you're ready to go!



传统音响

### 有效抑制声反馈

Effective reduction of feedback



独立的扬声器组专用信号处理和特殊的啸叫抑制声学构造可以有效的抑制话筒啸叫，使得系统可以独立在表演者后方起到了主扩和监听的的双重功能。

Proprietary signal processing for separate speaker groups combined with very wide horizontal sound dispersion results in effective reduction of microphone feedback. This enables the system to work as main PA-system and monitoring for the performer at the same time.

### 卓越的便携性

Great portability



系统由三个模块构成，一个低音，两根音柱，它们之间采用专利技术的插口，能在几秒之内完成组装或拆卸，配上音柱背包和低音脚轮板（选购），该系统可以方便的从A场地，转移到B场地，一台设备可以使用在多个场所。

Each column system consists of three components, those being one subwoofer and two column speakers. They can be assembled and dismantled within seconds due to our patented connection socket technology. Matched with the according backpack for the column speakers and a dolly board for the subwoofer (optional accessories), the system can be conveniently moved from premise to premise.



传统音响

## “演出级”便携式多合一有源音柱系统

### HIGH-POWER ALL IN ONE COLUMN SYSTEM

M-A8是一款“大功率，演出级”有源多合一音柱扩声系统。该系统具有“全频域”、“快速安装”、“可扩展”、“即插即用”等特点。通过采用DSP开关电源多通道数字功放，2x1“近场，远场波导管高音，16x3.5”中低音，2x12”低音组成一个6频有源系统。安全方面具有多重限幅、线路、热保护。音质方面，全频带音响，声音平衡，音质清晰，音乐表现好，低音可扩展，独特技术设计使声场水平120°均匀覆盖。

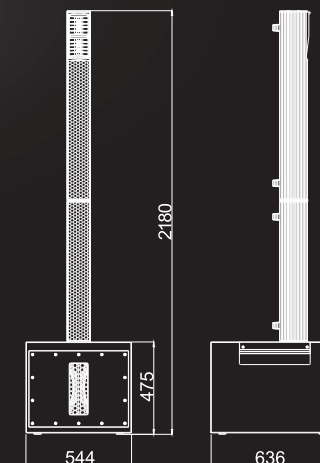


M-A8 is a high-power and thus performance-oriented active all-in-one column system. It is powered by a multi-channel digital amplifier with built-in DSP and comes with a switching-mode power supply. The system has two 1" waveguide tweeters, one taking care of far-field coverage and the other one being angled to cover the near field. It further has sixteen 3.5" mid-range drivers, separated into four groups. Proprietary signal processing for these groups achieves optimal acoustic performance and effective reduction of microphone feedback. To round it off, a double 12" sub woofer provides powerful punchy bass. The safety and reliability of this system is guaranteed by multiband limiting, advanced wiring and thermal protection. For bigger venues, optional slave extension subs are available.

#### 应用场所 Applications

- 会议扩声
- 公司培训
- 乐队演出
- 展馆、酒店大堂
- 音乐餐吧
- Middle and large-scale meeting rooms
- Middle and large-scale multi-media rooms
- Band performance
- Show room and hotel lobby
- Musical restaurant

#### 结构图 Structural diagram



#### 宽广均匀的水平声场覆盖 低音同步控制

Wide horizontal sound coverage

独特的研发科技，采用柱面波扩散技术，避免声音过快的衰减。同时120°的水平扩散角度，实现宽广均匀的声音覆盖。得益于出色的5声道、数字分频有源系统，使整套系统频宽更广。加上内置的压限、均衡及相位一线化等设置并配合独特的扬声器单元，使音质更清晰。同时可扩展的低音可以增加音柱的高度，从而使投射的距离有效增加，使声场可以覆盖至600人。并且可以根据音乐类型调节低音的丰满度，既保证了声场的均匀度，也提高了音乐的表现力。

The array configuration of the system ensures sound coverage with very consistent sound distribution even into the farthest corners of the venue. The cylindrical wave avoids quick sound attenuation and makes the sound performance more stable in different environments by strongly reducing floor and ceiling reflections. Proprietary signal processing generates a clear, dynamic and balanced acoustic performance throughout the frequency range. Additional subwoofers achieve scalability of the system for different venue sizes.



#### 快速安装，操作简便

Easy operation

2分钟即可完成系统搭建。M-A8只需插入一根电源线和一根信号线，任何人经过几分钟的培训就能操控此设备。相比常规音箱系统繁杂的连接线，多得眼花缭乱旋钮，M-A8大大降低了使用难度。可扩展的低音提供了“从属”模式，只要简单的在面板上拨动一下开关，即可以通过主低音上的音量旋钮同步控制“从属”低音音量输出，一切都是如此简便。

Few components guarantee an easy and quick system setup as M-A8 needs virtually no product training to be operated correctly. No complex wiring, no piles of speakers and accessories - just plug in power cable and signal wire and you're ready to go! For slave extension subwoofers, they simply need to be connected to the already processed subwoofer signal output of the main column system. To complete the connection, just set the DSP switch of the slave extension sub to slave mode. Its volume will then synchronously be adjusted by the main system.



#### 优越的便携性

Great portability

系统由三个模块构成，一个低音，两根音柱，它们之间采用专利技术的接口，能在几秒之内完成组装或拆卸，配上音柱背包和低音脚轮板（选购），该系统可以方便地从A场地，转移到B场地，一台设备可以使用在多个场所。

Each column system consists of three components, those being one subwoofer and two column speakers. They can be assembled and dismantled within seconds due to our patented connection socket technology. With backup for the columns and a dolly board for the subs, the system can be moved conveniently.



#### 抑制声回授（啸叫）

Effective reduction of feedback

独特的单元布局使声波在空间扩散中得到优化并内置了针对性的信号优化处理，使得用户即使是站在音柱前，系统也可以有效的抑制声回授（啸叫），从而使用户可以更加轻松自在的发挥。

The wide horizontal dispersion with very smooth SPL roll off provides another useful effect. Even far out of axis, the complete sound is still clearly audible. Therefore the user does not need an additional monitor speaker and the smooth off axis SPL attenuation microphone feedback effectively.

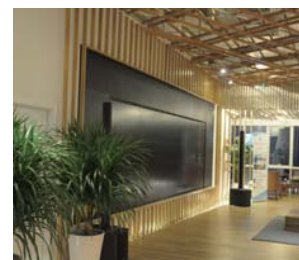




会议室 Meeting and multi-media rooms

声音的还原性、可懂度、参会人员任意位置的听感、偶尔播放音乐、话筒啸叫抑制、会议室音响设备的摆位美观度和装饰的完美结合，是会议室音响系统设计几大重点，德国研发团队在设计之初便进行过大量的验证。

The meeting and multi-media room audio system is mainly designed to achieve a crystal clear sound performance with wide coverage even in the farthest corners of the venue. It is also expected to integrate itself into the application environments smoothly and have functions like music-play and feedback control. Our German designers have already taken the above-mentioned points into good consideration from the very beginning.





酒吧 Bars

优质的声音还原性能、低音重放时的澎湃感，与大气的外表结合，不仅不会破坏原有的装饰风格，反而更增加了装饰与音乐系统的完美和谐融合，解决了很多设计师和业主一直难以解决的装修与音响系统很难两者兼顾原则，是众多五星级酒店酒吧清吧的第一选择。

Excellent sound quality and punchy bass, combined with elegant appearance, enable the system to integrate itself into the application environments smoothly without ruining the original style of decoration. It also greatly helps many designers and landlords to find a balance between room decoration and audio system installation. Therefore it has been highly recommended by many five-star hotels.



乐队扩声 Bands

平直的频响保证了各种乐器的音质，同时V型结构的双低音的独特设计，保证了良好的音乐重放能力和强劲的震撼力，同时其特殊的声学设计，使得该音箱可以放在歌手身后，而不会产生啸叫。

Flat frequency response guarantees the sound quality of various instruments. The system adopts a unique V-construction with double woofers to ensure high-quality bass sound reproduction and punchy sound effect. Employed with a special acoustic design, the system reduces microphone feedback even if the loudspeaker is placed right behind the performer.

## 参数规格 Specification

型号 / Model name	M-A5	M-A8	M-A5	M-A8
类型 / Type:	多合一有源音柱系统	多合一有源音柱系统	ALL IN ONE ACTIVE COLUMN SYSTEM	ALL-IN-ONE ACTIVE COLUMN SYSTEM
声学参数 / Acoustical Specifications				
频响范围 Frequency Range (-6dB):	40 Hz - 20 kHz	40 Hz - 20 kHz	40 Hz - 20 kHz	40 Hz - 20 kHz
最大声压级 / Max.SPL (1m) <sup>1</sup> :	131 dB 峰值声压级	137 dB 峰值声压级	131 dB peak	137 dB peak
水平指向角度 Horizontal Dispersion (-6dB):	120°	120°	120°	120°
扬声器单元 / Transducer				
低音 / LF:	2 × 8" 铁氧体单元, 2"音圈	2 × 12" 钕磁单元, 3"音圈	2 × 8", Ferrite magnet, 2" voice coil	2 × 12", Neodymium magnet, 3"voice Coil
中音 / MF:	16 × 2.8" 钕磁单元, 带冷却模块, 0.75"音圈	16 × 3.5" 钕磁单元, 1"音圈	16 × 2.8", Neodymium magnet, with cooling module, 0.75" voice coil	16 × 3.5", Neodymium magnet, 1"voice coil
高音 / HF:	1 × 1" 钕磁树脂膜高音, 1"音圈	2 × 1" 铁氧体 PEN膜高音, 1"音圈	1 × 1", Neodymium magnet phenolic diaphragm, 1" voice coil	2 × 1", ferrite magnet PEN diaphragm, 1" voice coil
功放 / Amplifier				
类型 / Type:	Class D功放, SMPS电源	Class D功放, SMPS电源	Class D amplifier, SMPS	Class D amplifier, SMPS
信号处理 / Signal Processing:	DSP, 48 kHz, 24 bits	DSP, 48 kHz, 24 bits	DSP, 48 kHz, 24 bits	DSP, 48 kHz, 24 bits
额定功率 Power Output (RMS):	重低音: 400 W 音柱: 400 W	重低音: 800 W 音柱: 800 W	Subwoofer: 400 W Column: 400 W	Sub: 800 W Column: 800 W
保护 / Protection:	多重限幅, 短路, 热保护	多重限幅, 短路, 热保护	Multiple limiter, short circuit, overheating	Multiple limiter, short circuit, overheating
控制 / Controls:	On / Off 开关, 总音量, 低音音量, MP3 / Hi-Z 音量, MIC 音量, 线路输入音量	On / Off 开关, 总音量, 低音音量	On / Off switch, main level, sub level, MP3 / Hi-Z volume, MIC volume, Line volume	On / Off switch, main level, sub level
指示灯 / Indicators:	电源指示, 信号指示, 限幅指示, 保护指示	电源指示, 信号指示, 限幅指示, 保护指示	On, signal, limit, protect	On, signal, limit, protect
输入 / 输出接口 / Input / Output				
线路输入 / Line Input:	XLR / 6.3 mm jack (组合), RCA	XLR / 6.3 mm jack (组合), RCA	XLR / 6.3 mm jack (combo), RCA	XLR / 6.3 mm jack (combo), RCA
MIC 输入 / Input:	XLR / 6.3 mm jack (组合)	无	XLR / 6.3 mm jack (combo)	N/A
MP3 / Hi-Z 输入 Input:	3.5 立体声插孔 / 6.3 mm jack	无	3.5 stereo / 6.3 mm jack	N/A
线路输出 / Line Output:	XLR	XLR	XLR	XLR
处理后低音信号输出 / Processed Sub Slave Control out	无	XLR	N/A	XLR
箱体 / Cabinet				
低音音箱 / Subwoofer:	V型, 倒相式, 15 mm 多层板, 聚脲漆	V型, 带通式, 18 mm 多层板, 聚脲漆	V construction, bassreflex, 15 mm plywood, Polyurea coating	V construction, bandpass, 18 mm plywood, Polyurea coating
音柱 / Column:	密闭式, 6063铝合金, HD 涂层	密闭式, 6063铝合金, HD 涂层	Sealed, 6063 Aluminum, HD coating	Sealed, 6063 Aluminum, HD coating
连接器 / Connector:	多针定制连接器	多针定制连接器	Custom-made multipin connector	Custom-made multipin connector
尺寸 / Dimensions (W × H × D)				
低音音箱 / Subwoofer:	390 × 469 × 512 mm	544 × 475 × 636 mm	390 × 469 × 512 mm	Sub: 544 × 475 × 636 mm
上音柱 / Top Column:	110 × 790 × 90 mm	120 × 977 × 192 mm	110 × 790 × 90 mm	120 × 977 × 192 mm
下音柱 / Bottom Column:	110 × 790 × 90 mm	120 × 728 × 180 mm	110 × 790 × 90 mm	120 × 728 × 180 mm
安装后高度 / Overall Height:	2050 mm	2180 mm	2050 mm	2180 mm
重量 / Weight				
低音音箱 / Subwoofer:	25.5 kg	42.5 kg	25.5 kg	42.5 kg
音柱 / Column:	5.4 kg + 4.8 kg	9.5 kg + 6.5 kg	5.4 kg + 4.8 kg	9.5 kg + 6.5 kg

1. 使用12 dB峰值因子粉红噪声信号测试得到, 全空。 Measured with 12 dB Crest Factor Pink Noise, whole space.



### 型号 M-A8 SE

类型: 双12" V型带通式

声学参数

频响范围 (-6dB): 40 Hz - 150 Hz

最大声压级 (1m)<sup>2</sup>: 136 dB 峰值声压级

扬声器单元

低音: 2 × 12" 钕磁单元, 3" 音圈

功放

类型: Class-D

信号处理: DSP

额定功率 (RMS): 800 W

保护: 多重限幅

控制: On / Off 开关, 总音量, 低音音量

指示灯: 电源指示, 信号指示, 限幅指示, 保护指示

输入 / 输出接口

线路输入: XLR / 6.3 mm jack (组合), RCA

线路输出: XLR

箱体

低音音箱: V型, 带通式, 18 mm 多层板, 聚脲漆

尺寸

低音音箱: 544 × 475 × 636 mm

重量

低音音箱: 41.5 kg

Model name **M-A8 SE**

Type: Dual 12" V construction, band pass

Acoustical specifications

Frequency range (-6dB): 40 Hz - 150 Hz

Max.SPL (1m)<sup>2</sup>: 136 dB peak

Transducer

LF: 2 × 12", neodymium magnet, 3"voice coil

Amplifier

Type: Class-D

Signal processing: DSP

Power output(RMS): Sub: 800 W

Protection: Multiple limiter

Controls: On / Off switch, main level, sub level

Indicators: On, signal, limit, protect

Input / Output

Line input: XLR / 6.3 mm jack (combo), RCA

Line output: XLR

Cabinet

Subwoofer: V construction, bandpass, 18 mm plywood, polyurea coating

Dimensions (W × H × D)

Subwoofer: 544 × 475 × 636 mm

Weight

Subwoofer: 41.5 kg

2. 使用12dB峰值因子粉红噪声信号测试得到, 半空。 Measured with 12 dB Crest Factor Pink Noise, half space.

